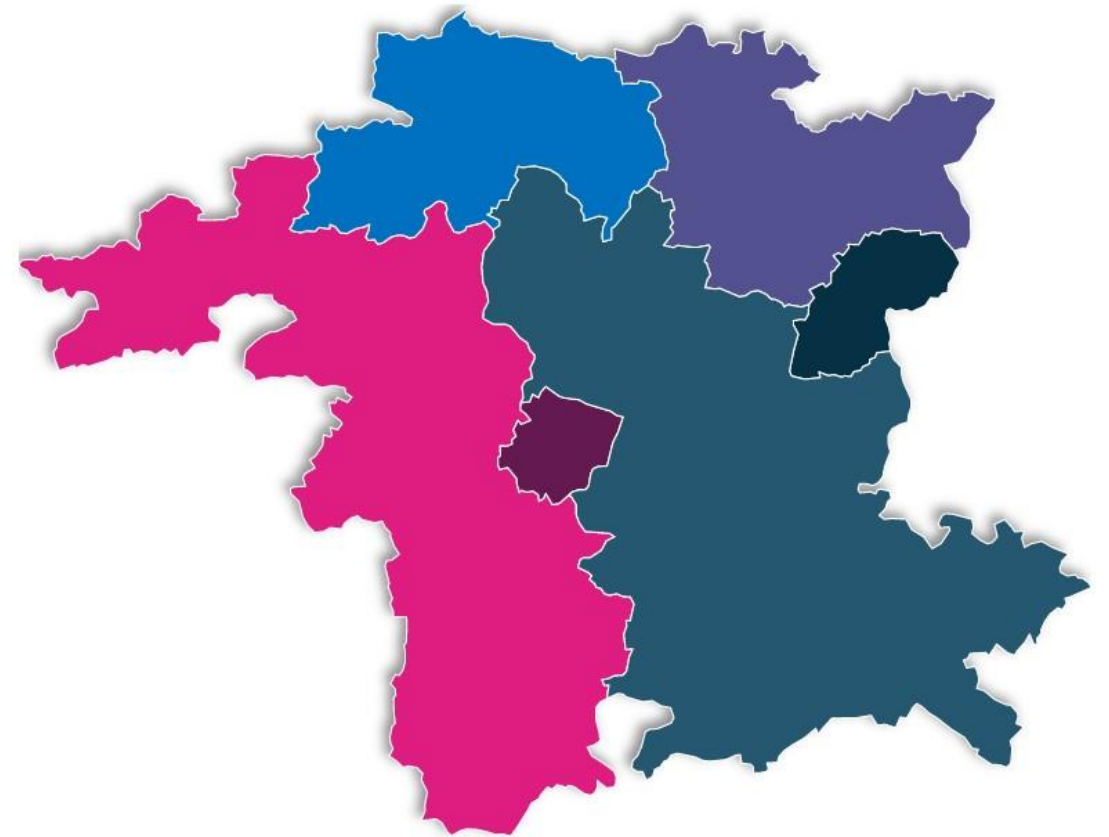


WYRE FOREST

Population projection

ONS population projection
Released: 2025, based on 2022 projections



ONS population projections: Introduction

- This presentation summarises the latest ONS population projections based on 2022 data for Wyre Forest. These are widely used for local planning of health, education and other service provisions. They are also sometimes used in the assessment of local authority needs and the funding formula. Projections are available from [Subnational population projections for England - Office for National Statistics](#)
- These projections give an understanding of the potential future size of the population, based on current and past trends. They are **not** forecasts or predictions. They don't take into account potential future policy changes.
- Demographic behaviour used to develop assumptions for projections is inherently uncertain and so projections become increasingly uncertain the further they are carried forward. This is particularly so for smaller geographical areas and detailed age and sex breakdowns.
- A range of scenarios, or variants, are presented so decision makers can use the right projection for their needs.
- Projected figures for the 'migration category variant' projection is seen as best fit for overall UK population as it fits closest with international migration estimates published in May.

Wyre Forest: 2032 projected figures

Wyre Forest in 2032:

Projected population

104,735

people

up from 102,306 people in 2022.

Population change since 2022

+2.4%

compared to +6.4% across England.

Net internal migration

+7,940

people

projected to be the largest factor in the population increase between 2022 and 2032.

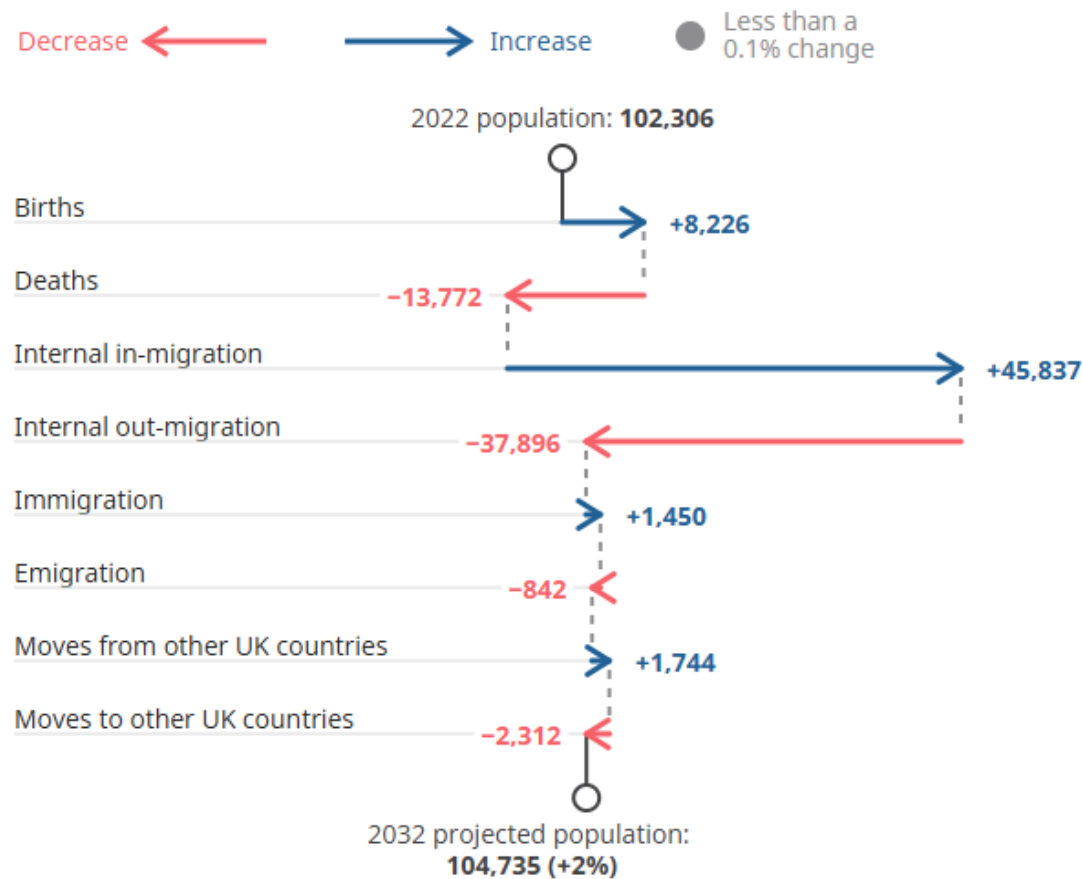
Projected median age

48 years

up from 47 years in 2022.



Wyre Forest: Contributors to population change



Source: Subnational population projections for England from Office for National Statistics – Migration category variant

In Wyre Forest, there is a fairly large population churn present due to Internal migration with large numbers moving in and out.

There is a high annual movement of people aged 19-20 moving out of Wyre Forest to access higher education, with relatively high numbers moving into Wyre Forest in their early and mid 20s. This will include young adults returning to Wyre Forest once their studies have concluded.

Young adults tend to be the most mobile in terms of migration, moving for education and work purposes.

Wyre Forest: Contributors to population change

Population change is projected by looking at births and deaths (natural change) and people moving in and out of areas. In Wyre Forest, our projections show that between 2022 and 2032:

- **More deaths than births** mean that the population is projected to **decrease by 5,546**, with **8,226** births and **13,772** deaths in Wyre Forest between 2022 and 2032. This means natural change would decrease the population in Wyre Forest by **5.4%**, compared with an increase of 0.2% in England.

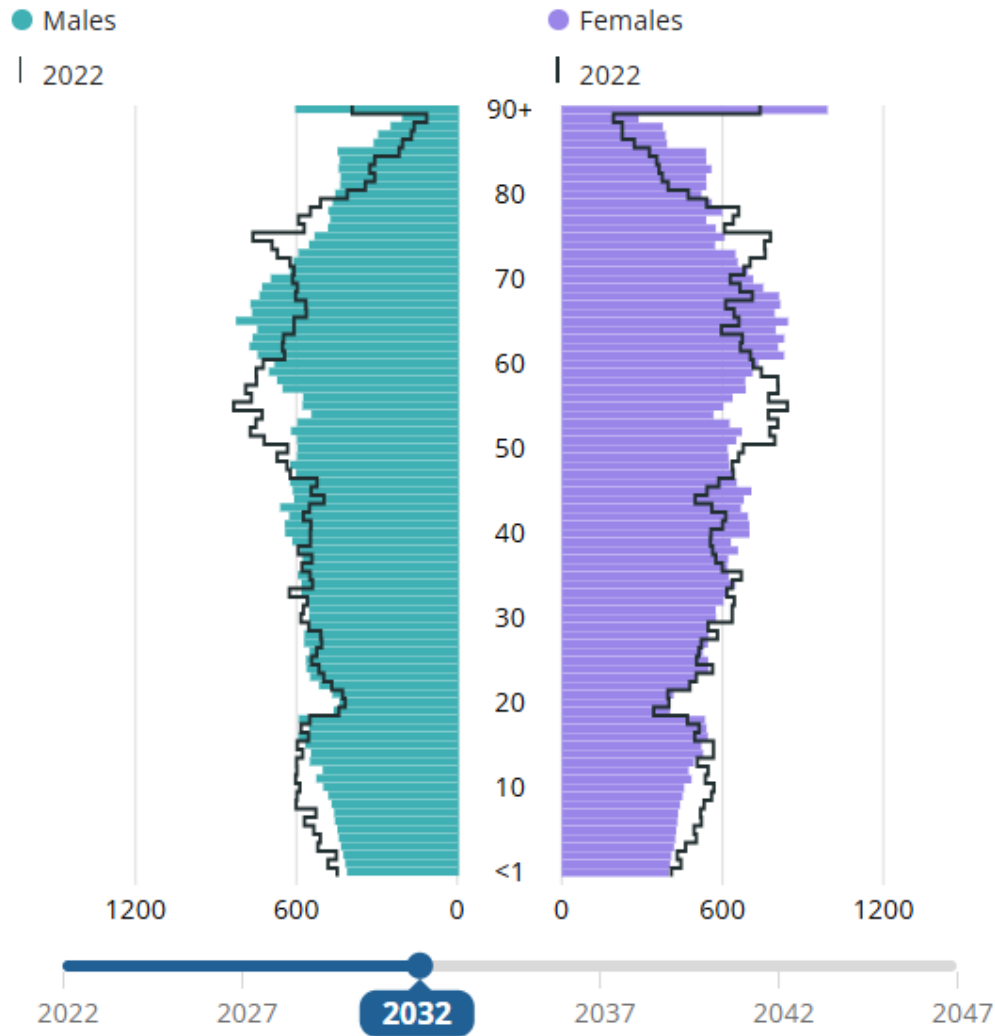
- **Net internal migration (people moving to and from other local authorities in England)** is projected to **increase the population by 7,940**, with **45,837** people moving to the area and **37,896** people moving from the area between 2022 and 2032. This would increase the population in Wyre Forest by **7.8%**.

- **Net cross-border migration (between UK nations)** is projected to **reduce the population by 569**, with **1,744** people moving to the area and **2,312** people moving from the area between 2022 and 2032. This would decrease the population in Wyre Forest by **0.6%**.

- **Net international migration** is projected to **increase the population by 607**, with **1,450** people moving to the area and **842** people moving from the area between 2022 and 2032. This would increase the population in Wyre Forest by **0.6%**, compared with an increase of 6.5% in England.



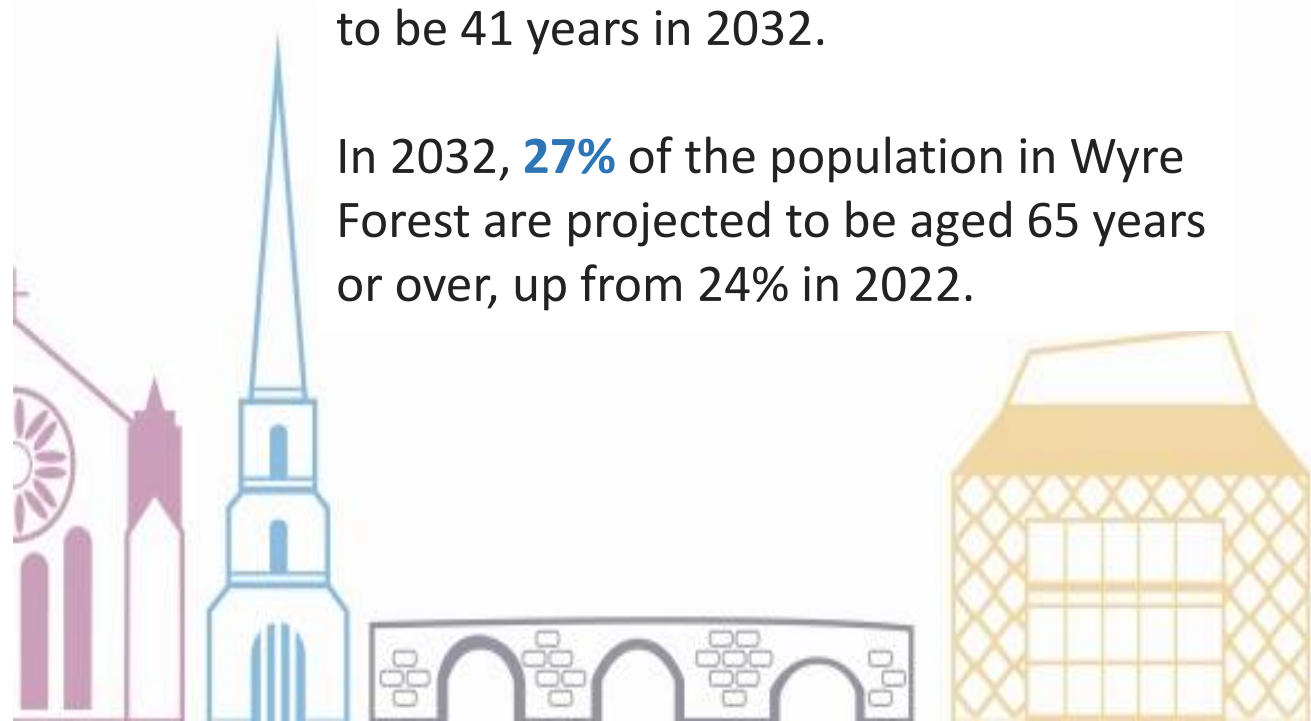
Wyre Forest: Age profile



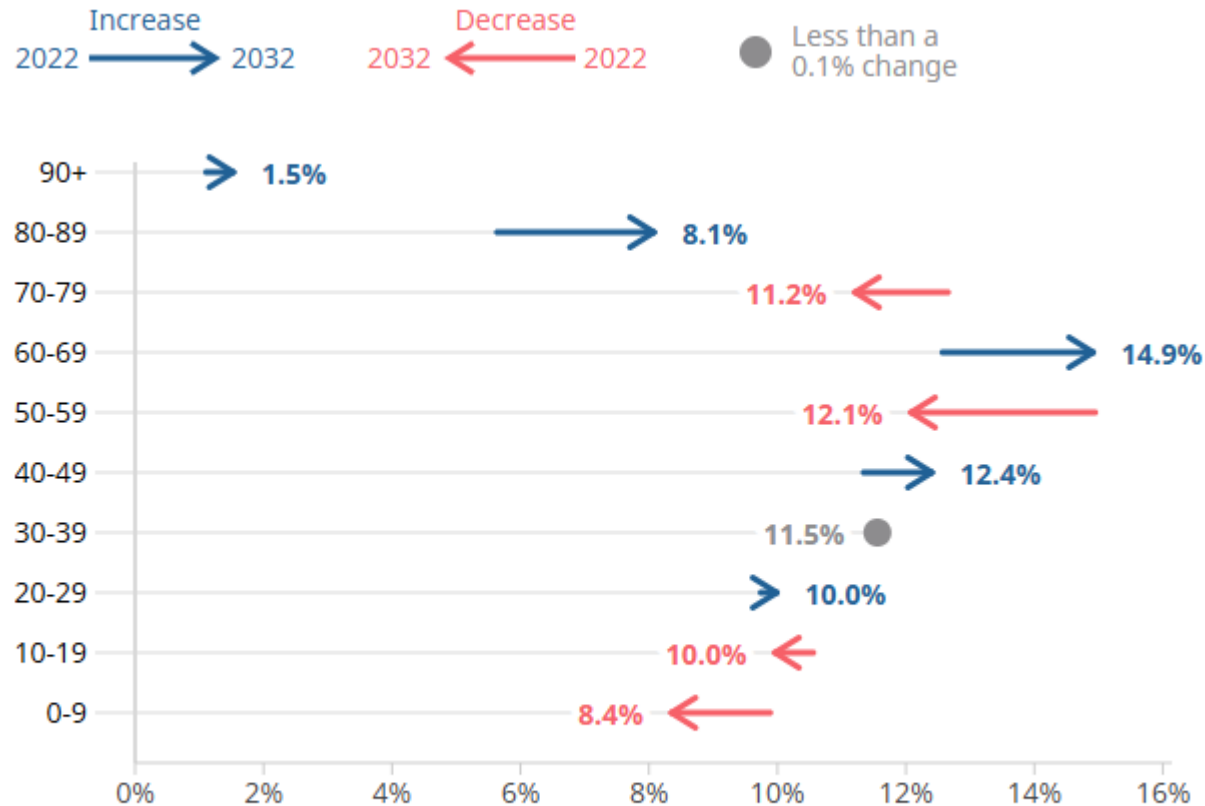
The median age in Wyre Forest is projected to rise from 47 years in 2022 to **48 years** in 2032.

In England, the median age is projected to be 41 years in 2032.

In 2032, **27%** of the population in Wyre Forest are projected to be aged 65 years or over, up from 24% in 2022.



Wyre Forest: Percentages of total population by 10-year age bands, 2022 and 2032



Source: Subnational population projections for England from Office for National Statistics – Migration category variant

The 50 to 59 age group are set to see the largest change in Wyre Forest between 2022 and 2032, a **reduction** from **14.9% to 12.1%**.

The largest positive **increase** is in the 80-89 age group, a projected rise from **5.6% to 8.1%**.

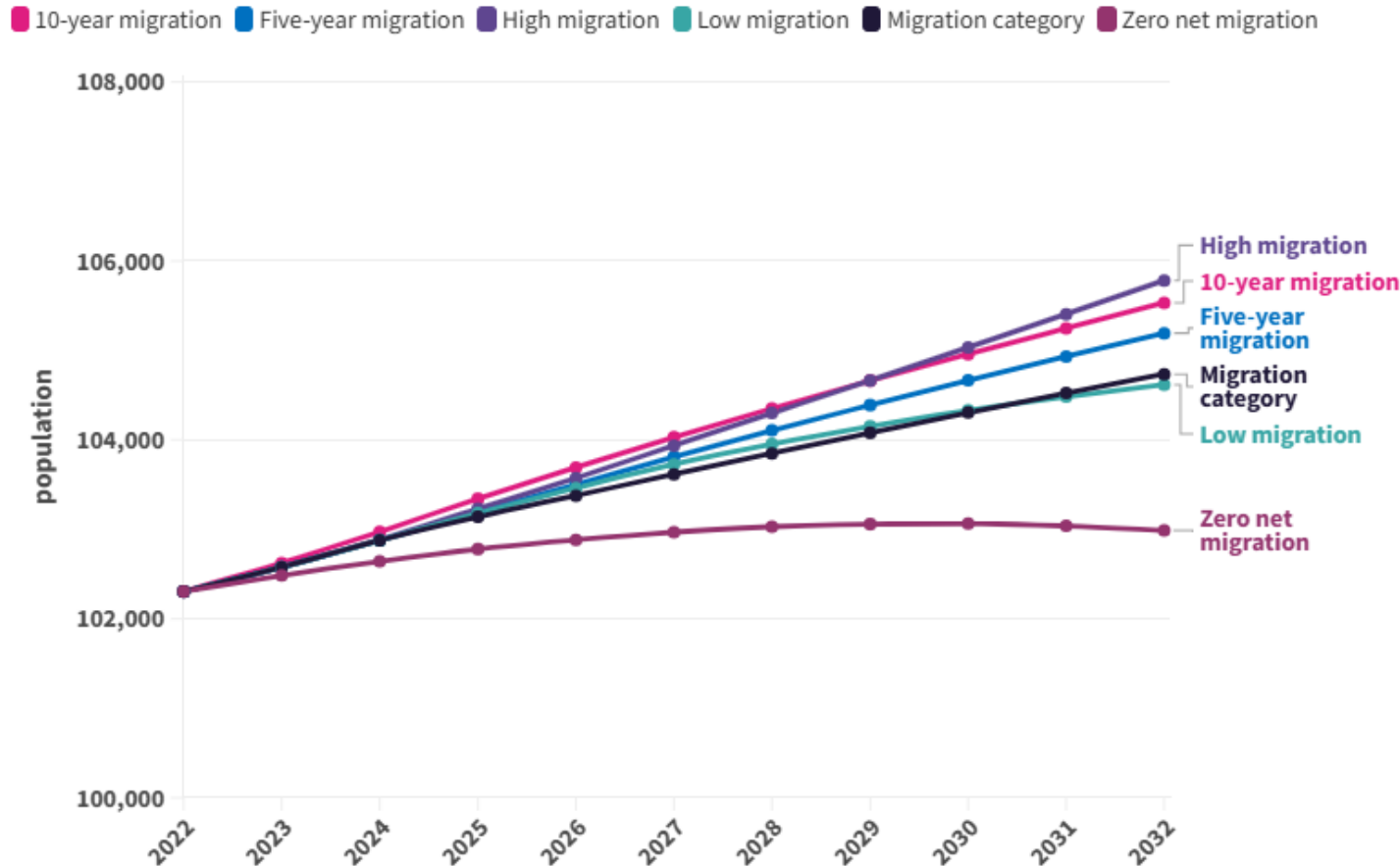
The 60-69 age group is also projected to **increase** noticeably.

Projections from the “migration category variant” presented



Wyre Forest: Variant population projections

Variant projected population change in Wyre Forest, 2022-2032



The following variant projections are included in the projections release:-:

- a high international migration variant
- a low international migration variant
- a zero net migration variant
- a 10-year migration variant
- a five-year migration variant (consistent with the NPP principal projection)
- Results for variant projections vary from...
 - **3,500 (3.4%) increase** for high migration variant;
 - **700 (0.7%) increase** for zero net migration variant.

Please note that y axis starts at 100,000 persons for presentation purposes

Wyre Forest projections: **Summary**

- **Population projections** - The projections presented are based on current and past trends. They are **not** forecasts or predictions and do not take into account potential future policy changes.
- **Total Population** – The population in Wyre Forest is projected to **increase** by **2,400 (2.4%)** between 2022 and 2032.
- **Natural change** – between 2022 and 2032 more births than deaths is projected to **decrease** Wyre Forest's population by **over 5,500 persons (5.4%)**
- **Migration impact** – Net cross-border migration is projected to **reduce** the population whilst net internal and international migration is projected to **increase** population. Overall impact of migration is projected to be an **increase of 8,000 persons**. This increase is primarily due to the impact of internal migration.
- **Age Profile** - Median age in Wyre Forest is projected to rise from **47 to 48 years** by 2032. The **60-69 and 80-89 age groups are projected to increase notably**.
- **Variant projections** – different migration scenarios show projected population changes ranging from a **3.4% increase** (High migration variant) to a **0.7% increase** (net zero migration).